

CLEP® Spanish Language

AT A GLANCE

Description of the Examination

The CLEP® Spanish Language exam is designed to measure knowledge and ability equivalent to that of students who have completed one to two years of college Spanish language study.

Material taught during both years is incorporated into a single exam, covering both Level 1 and Level 2 content. A test taker's proficiency level is dependent on the test score.

The exam contains approximately 121 questions to be answered in approximately 90 minutes. Some of these are pretest questions that won't be scored. There are three separately timed sections. The three sections are weighted so that each question contributes equally to the total score.

There are two Listening sections and one Reading section. Each section has its own timing requirements.

Listening Sections

- The two listening sections together are approximately 30 minutes long.
- The amount of time you'll have to answer a question varies according to the section and doesn't include the time you spend listening to the test material.
- Timing begins after the section directions are dismissed.
- You can change the volume by using the Volume testing tool.
- The audio portions of the listening sections will be presented only once.

Reading Section

- The Reading section is 60 minutes in length.

Knowledge and Skills Required

Questions on the Spanish Language exam require test takers to comprehend written and spoken Spanish. The subject matter is drawn from the abilities described below. The percentages next to the main topics indicate the approximate percentage of exam questions on each.

15% SECTION I: LISTENING: REJOINDERS

- Listening comprehension through short oral exchanges

25% SECTION II: LISTENING: DIALOGUES AND NARRATIVES

- Listening comprehension through longer spoken selections

60% SECTION III: READING

- | | |
|-----|---|
| 16% | Part A: Discrete sentences (vocabulary and structure) |
| 20% | Part B: Short cloze passages (vocabulary and structure) |
| 24% | Part C: Reading passages and authentic stimulus materials (reading comprehension) |

Study Resources

Most textbooks used in college-level Spanish language courses cover the topics in the above outline, but the approaches to certain topics and the emphases given to them may differ. To prepare for the CLEP Spanish Language exam, it is advisable to study one or more college textbooks, which can be found in most college bookstores. When selecting a textbook, check the table of contents against the knowledge and skills required for this test.

Besides studying basic vocabulary, you should understand and be able to apply the grammatical principles that make up the language. To improve your reading comprehension, read passages from textbooks, short magazine or newspaper articles, or other printed material of your choice. To improve your listening comprehension, seek opportunities to hear the language spoken by native speakers and to converse with native speakers. If you have opportunities to join organizations with Spanish-speaking members, to attend Spanish movies, or to listen to Spanish-language television or radio broadcasts, take advantage of them.

A recent survey conducted by CLEP found that the following textbooks are among those used by college faculty who teach the equivalent course. Most of these have companion websites with practice test questions and other study resources.

Armen, <i>Abriendo Puertas: Lenguaje</i> (McDougal Littell)
Gill et al., <i>En Contacto</i> (Heinle)
Gilman et al., <i>Nuevos Horizontes</i> (Wiley)
Iglesias and Meiden, <i>Spanish for Oral and Written Review</i> (Heinle)
Kiddle et al., <i>Perspectivas</i> (Heinle)
Knorre et al., <i>Puntos de Partida</i> (McGraw Hill)
Siskin et al., <i>Entrevistas: An Introduction to Language and Culture</i> (McGraw Hill)
Valdes and Teschner, <i>Español Escrito</i> (Prentice Hall)—for native speakers

In addition, the following resources, compiled by the CLEP test development committee and staff members, may help you study for your exam. However, none of these sources are designed specifically to provide preparation for a CLEP exam. College Board has no control over their content and can't vouch for accuracy.

AP® Spanish Language and Culture

edx.org/course/apr-spanish-language-culture-st-margarets-episcopal-school-aslcx

Some of the materials covered in this AP course are also examined by the CLEP Spanish Language exam. CLEP test takers may use this course as a study resource for the knowledge and skills covered by the CLEP Spanish Language exam.

Free online CLEP Spanish Language course offered by Modern States Education Alliance

modernstates.org/course/spanish-language/

StudySpanish.com

Trent University: Spanish Language Exercises

trentu.ca/academic/modernlanguages/spanish/masarriba/

Visit clep.collegeboard.org/prepare-for-an-exam/practice-for-the-exam for additional suggestions for exam preparation. In addition, many college faculty post their course materials on their schools' websites.

Sample Test Questions

The following sample questions don't appear on an actual CLEP examination. They are intended to give potential test takers an indication of the format and difficulty level of the examination and to provide content for practice and review. Knowing the correct answers to all of the sample questions isn't a guarantee of satisfactory performance on the exam.

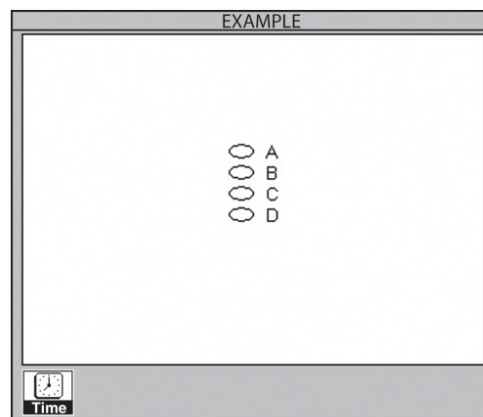
In addition to samples of each question type, there are sample computer screens showing how the directions and questions will appear to the candidate taking the test. For listening items, the script of the recording normally played by the computer appears here as italicized text.

Listening Directions: This part of the test measures your ability to understand spoken Spanish. There are two sections in this part of the test, with special directions for each section. The two listening sections of the test total approximately 30 minutes in length. The amount of time you have to answer a question varies according to the section and doesn't include the time you spend listening to the test material. Timing begins after the Section Directions are dismissed. You can change the volume by using the Volume testing tool.

The audio portions of the listening sections of the test will be presented only one time.

Section I Directions: You will hear short conversations or parts of conversations. You will then hear four responses, designated (A), (B), (C), and (D). After you hear the four responses, click on the lettered response oval that most logically continues or completes the conversation. You will have 10 seconds to choose your response before the next conversation begins.

1.



(MA) *¿Por qué van ustedes a Chile?*

(WA)

- A. Para estudiar allí
- B. Dentro de quince días
- C. Con una familia chilena
- D. Por avión

Section II Directions: You will hear a series of selections, such as dialogues, announcements, and narratives. Each audio selection is accompanied by a graphic or a picture. Each selection is followed by one or more questions.

Note: The timer is activated only when you are answering questions.

The questions have various formats. Some questions offer four possible responses, each with an oval to click to indicate your answer. Other questions ask you to select part of a graphic, fill out a table, or put a list in the correct order; for some of these questions, you will have to click in more than one place to complete your response. For these questions, follow the specific directions given.

In this section, you may adjust the volume only when a question is on your screen. It will affect the volume of the next audio prompt you hear. **You cannot change the volume while the audio prompt is playing.**

Questions 2–4: Narrative

Listen Now



(NARR) *El cumpleaños de un escritor famoso.*

(WA) *Con el tradicional pastel de chocolate, el escritor Ernesto Sábato celebró su 94 cumpleaños rodeado de sus amigos de toda la vida.*

Como todos los años, el famoso autor recibió los saludos de escritores internacionales y locales, así como de personalidades de la cultura y la política.

Con motivo de esa ocasión, la artista plástica Silvina Benguria, su amiga desde 1964, lo visitó en su casa. Según dijo la artista, el escritor ha sido la persona con

quien más se ha podido reír en el mundo. Ha sido capaz de inventar las historias más increíbles y hasta creérselas.

Used by permission of La Nación.

2. ¿Cuál es el tema de esta selección?
 - A. Un análisis literario
 - B. Una ocasión de festejo
 - C. Un relato histórico
 - D. Una tradición del país
3. Según la selección, ¿cuál es la relación entre Silvina Benguria y Ernesto Sábato?
 - A. Son hermanos.
 - B. Son esposos.
 - C. Son amigos.
 - D. Son vecinos.
4. ¿Qué opinión tiene Silvina Benguria del escritor?
 - A. Es filosófico.
 - B. Es generoso.
 - C. Es cómico.
 - D. Es sincero.

Section III Reading Directions: This section measures your ability to read Spanish. There are three parts in this section, with special directions for each part. The Reading section on the exam is approximately 60 minutes.

Directions for Part A: Each incomplete statement is followed by four suggested completions. Select the one that is best in each case.

5. Mi día comienza a las seis de la mañana cuando suena mi _____.
 - A. despertador
 - B. biblioteca
 - C. teclado
 - D. escritorio
6. Ojalá que _____ tapas deliciosas en la recepción de esta noche.
 - A. hay
 - B. haya
 - C. hayan
 - D. hayamos

Directions for Part B: In each of the following paragraphs, there are blanks indicating that words or phrases have been omitted. When a blank is shaded, four completions are provided. First, read through the entire paragraph. Then, for each blank, choose the completion that is the most appropriate, given the context of the entire paragraph.

Sebastián miró a su alrededor. Él no sabía ____7____ estaba. Sólo recordaba que había llegado el día anterior a esta ciudad. La noche era un misterio. Recorrió las calles interminables ____8____ cansarse, y entró en un café oscuro y desierto.

7.
 - A. cuándo
 - B. cuál
 - C. dónde
 - D. cuánto
8.
 - A. hasta
 - B. entre
 - C. hacia
 - D. dentro

Directions for Part C: Read the following selections.

Each selection is followed by one or more questions, incomplete statements, or commands. For each question or incomplete statement, select the answer or completion that is best according to the selection. For each command, click on the appropriate area of the screen according to the directions given.



MUNDO MART
MERCADO INTERNACIONAL
EL CORAZÓN DE TODO LO NUESTRO

Únete a más de 150 comerciantes en este nuevo mercado.
Aquí habrá a tu disposición banco, restaurante,
luz, agua, gas, seguridad y publicidad.

Si vendes discos, ropa deportiva, música y artesanía,
tenemos el puesto ideal para tu negocio.
Reserva tu espacio hoy; cupo limitado.
Rentas desde \$50.00 por fin de semana

Llama a Juan Guzmán **(614) 555-4770**
9am – 1pm / 4pm – 8pm

9. Según el anuncio, ¿qué se puede reservar al llamar al número telefónico presentado?
- A. Un apartamento
 - B. Una mesa en un restaurante
 - C. Un sitio para vender
 - D. Boletos para un concierto
10. ¿Cuál es una ventaja de Mundo Mart?
- A. Está abierto 24 horas al día.
 - B. Ofrece una variedad de servicios.
 - C. No hay que reservar el espacio por adelantado.
 - D. El uso del espacio es gratuito en los fines de semana.

Credit Recommendations

The American Council on Education has recommended that colleges grant six credits for a score of 50, which is equivalent to a course grade of C, on the CLEP Spanish Language exam, and nine credits for a score of 63. Each college, however, is responsible for setting its own policy. For candidates with satisfactory scores on the Spanish Language examination, colleges may grant credit toward fulfillment of a distribution requirement, or for a particular course that matches the exam in content. Check with your school to find out the score it requires for granting credit, the number of credit hours granted, and the course that can be bypassed with a passing score.

Answers to Sample Questions:

1-A; 2-B; 3-C; 4-C; 5-A; 6-B; 7-C; 8-A; 9-C; 10-B